

GOOLWA DUNES

SOUTH AUSTRALIA



Goolwa Dunes: 17 Boulton Street, Goolwa, SA, 5214

Goolwa Dunes is in the perfect spot, hidden amongst the sand dunes in a quiet cul-de-sac, a minute from the beach. Take time out and relax in this light filled, two-storey home, kindly donated by the Miller family. Enjoy waking up to the sound of the ocean and look out onto the reserve with your morning coffee miles from the hustle and bustle.

Upstairs boasts large open plan living and two balconies to enjoy the wonderful views across a reserve towards the hills and Middleton. It also has two living areas, one for viewing the TV/DVD and a second area with couches, both enjoy fantastic views of the reserve. Downstairs are three bedrooms, main with ensuite, and there is another living area with a TV/DVD and PlayStation.

Take a 15 minute stroll and find yourself in the heart of Goolwa, which is lined with heritage buildings that surround the Goolwa Park, a beautiful area of lawn, pathways and gardens. Visit the Goolwa Hotel built in 1853 which is full of treasures from the Irish sailing ship 'Mozambique', the mast is a joist in the hotel dining room, the staircase and chairs and figurehead all adorn the hotel.

*Relax in this light
filled and uplifting
retreat - only minutes
from the beach and
the town centre of
Goolwa, renowned
for its historical
treasures*

The OTIS Foundation

PO Box 1191, Bendigo Central
Victoria, 3552

Phone: (03) 5444 1184

email: bookings@otisfoundation.org.au

otisfoundation.org.au

Providing sanctuaries to nurture those facing the challenges of living with breast cancer

THE **OTIS**
FOUNDATION
BREAST CANCER RETREATS



GOOLWA DUNES

SOUTH AUSTRALIA

Retreat details

Location and area

Goolwa Dunes is located in Goolwa, a historic river port at the mouth of the Murray River on Lake Alexandrina, approximately 85km south of Adelaide.

The property is located on a quiet street, one minute walk from the beach. Directly adjacent to the property is Tokuremoar Reserve, a significant site for traditional custodians Ramindjeri / Ngarrindjeri. The 70 hectare site contains rare and endangered indigenous plant and bird species including a coastal melaleuca forest.

Accommodation

Goolwa Dunes accommodates four people and is ideal for families. It has two bathrooms and three downstairs bedrooms, two with queen beds and one with two singles.

Availability

Goolwa Dunes is available for four night stays from Monday to Friday from May to September. Not available during weekends or holidays.

Pets/Smoking

Pets are not permitted and Goolwa Dunes is strictly smoke free.

Heating/Cooling

The retreat has a reverse cycle air conditioner and ceiling fans.

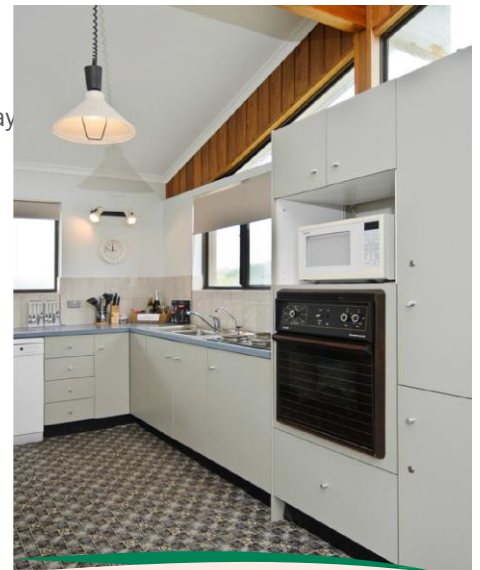
Key access

The keys are available for collection from a key box located at the property. The OTIS Foundation will contact you two weeks prior to your stay, to provide the location, access and security alarm information.

Other considerations

Stay limit

Guests are welcome for one stay per year at this property.



The OTIS Foundation

PO Box 1191, Bendigo Central
Victoria, 3552

Phone: (03) 5444 1184

email: bookings@otisfoundation.org.au

otisfoundation.org.au

Providing sanctuaries to nurture those facing the challenges of living with breast cancer

THE **OTIS**
FOUNDATION
BREAST CANCER RETREATS

